

Plastic Mold Bearing



**Adopted JIS 69 Series Bearings
for Plastic Mold Bearing**



For more product information

Adopted JIS 69 Series Bearings for Plastic Mold Bearing

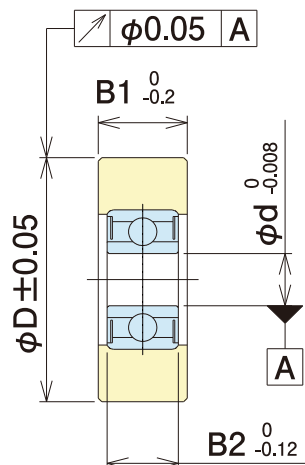
ISC's plastic mold bearing adopted JIS69 series which carries higher load capacity. This bearing is made by insert molding and designed plastic width wider than bearing width, which contributes the higher pull-out force. Polyacetal plastic is machine finished and carries smooth and better run-out accuracy. Same bearing with creep free ring (Creep Free Bearing) is also available. Standard outer shape is straight and V/U groove shape is available upon request.

■ Standard Dimension

Part Number	Dimensions(mm)				Bearing
	φ d	φ D	Width		
			B1	B2	
9HFE201	2		4	3	692ZZ
10HFE201					
11HFE201					
12HFE301	3		5	4	693ZZ
13HFE301					
14HFE301					
15HFE301					
16HFE301					
17HFE301					
15HFE401	4		6	4	694ZZ
16HFE401					
17HFE401					
18HFE401					
19HFE401					
20HFE401					
18HFE501	5		6	4	695ZZ
19HFE501					
20HFE501					
22HFE501					
23HFE501					
24HFE501					

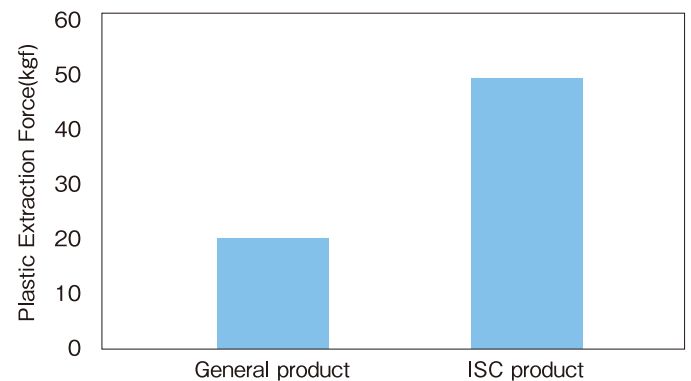
Part Number	Dimensions(mm)				Bearing
	φ d	φ D	Width		
			B1	B2	
19HFE601	6	19	7	5	696ZZ
20HFE601		20			
21HFE601		21			
22HFE601		22			
23HFE601		23			
24HFE601		24			
25HFE601		25			
26HFE601		26			
24HFE801	8	24	7	6	698ZZ
25HFE801		25			
26HFE801		26			
28HFE801		28			
29HFE801		29			
30HFE801		30			

- *1. Standard inventory item is flat shape only.
 *2. V/U groove shape is available upon request.

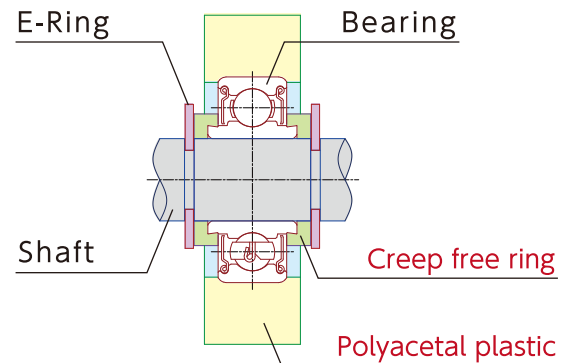


■ Plastic Extraction Force

Bearing outside diameter: $\phi 16$ width: 5



Bearing with creep free ring (Creep Free Bearing)



Just like ISC's plastic mold bearing, the bearing is made by insert molding and polyacetal plastic is machine finished. Creep free ring is equipped with inner ring which contributes to increase performance of creep-resistance between inner ring and shaft. Width of inner ring is wider than outer ring which makes assembly easier and directly assemble with E-rings and so on. (No need to use spacer). V/U groove shape is available upon request.

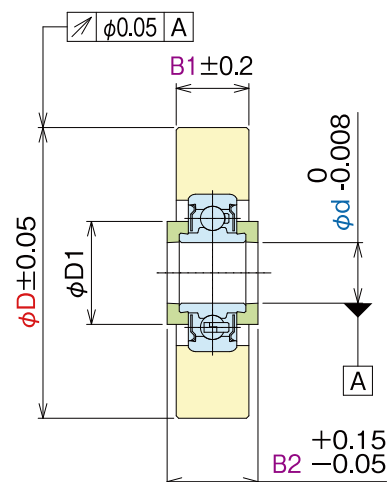
Standard Dimension

Part Number	Dimensions(mm)					Bearing
	φd	φD	φD1	Width		
				B1	B2	
9HFD201	2	9	4	4	6	692ZZ
10HFD201		10				
11HFD201		11				
12HFD301	3	12	5.35	5	7	693ZZ
13HFD301		13				
14HFD301		14				
15HFD301		15				
16HFD301		16				
17HFD301		17				
15HFD401	4	15	7.1	6	7.5	694ZZ
16HFD401		16				
17HFD401		17				
18HFD401		18				
19HFD401		19				
20HFD401		20				
18HFD501	5	18	8.5	6	7.5	695ZZ
19HFD501		19				
20HFD501		20				
22HFD501		22				
23HFD501		23				
24HFD501		24				

Part Number	Dimensions(mm)					Bearing
	φ d	φ D	φ D1	Width		
				B1	B2	
19HFD601	6	19	9.8	7	8.5	696ZZ
20HFD601		20				
21HFD601		21				
22HFD601		22				
23HFD601		23				
24HFD601		24				
25HFD601		25				
26HFD601		26				
24HFD801	8	24	12.3	7	9.5	698ZZ
25HFD801		25				
26HFD801		26				
28HFD801		28				
29HFD801		29				
30HFD801		30				

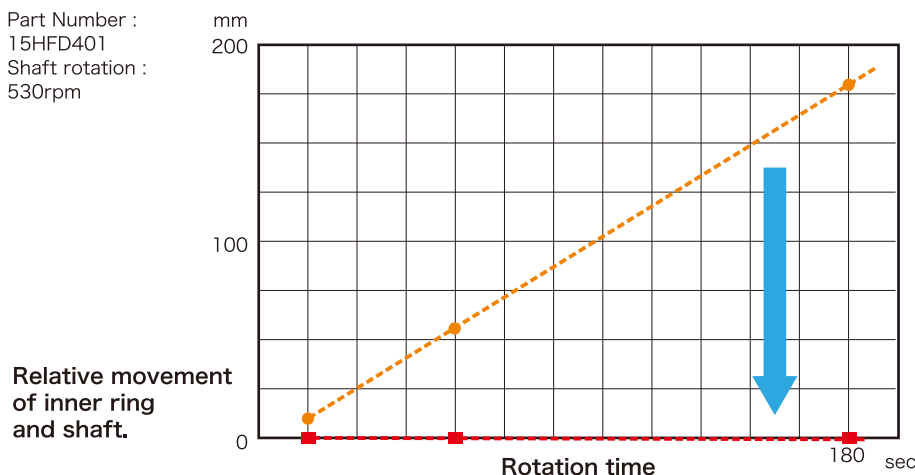
*1. Standard inventory item is flat shape only.

*2. V/U groove shape is available upon request.



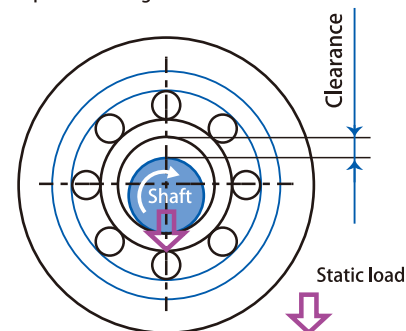
Creep performance testing result

Part Number :
15HFD401
Shaft rotation :
530rpm



Clearance between inner ring and shaft 0.035mm

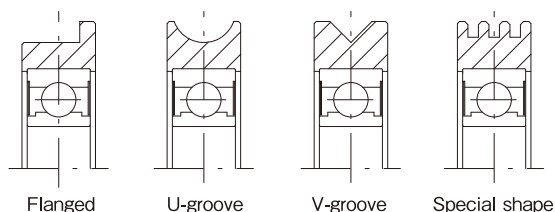
● Standard bearing
■ Creep free bearing



Free customize on outer shape

Plastic outer shape can be customized freely according to customer's request.

*Standard inventory item is flat shape only.



Flexible bearing selection according to the application

ISC can comply with various customer's application

(i.e) For higher anti-corrosiveness → Plastic mold with **CASTOP** bearing

For clean environment → Plastic mold bearing with clean grease bearing.

*Standard inventory item uses in-house made standard class bearing (Material: bearing steel)

Reliable in-house made bearing

All of adapted bearing for plastic mold bearing is made in-house which passed strict accuracy and noise inspection.

Excellent outer diameter run-out accuracy

Machine finish contributes excellent OD run-out accuracy (OD run-out accuracy: Less than 50μm)

Best choice for the application which requires severe run-out accuracy

Better prevention for slip between bearing and shaft (Creep)

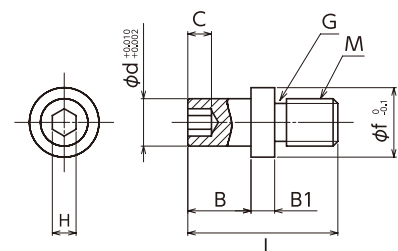
ISC can offer plastic mold bearing with creep prevention ring (Creep Free Bearing)

for the solution for slight slip between bearing and shaft.

Plastic mold bearing with shaft is also available.

Please select shaft from the below table.

TYPE	d	B	B1	L	f	M	G	H	C
φ3 shaft type	3	4	1.5	9.5	4.4	M3×P0.5	φ2.4×0.75 undercut	1.5	1.5
φ4 shaft type	4	5	2	12	5.6	M4×P0.7	φ3.2×1.1 undercut	2	2
φ5 shaft type	5	5	2	13	6.6	M5×P0.8	φ4.1×1.2 undercut	2.5	2.5
φ6 shaft type	6	5	2	15	7.9	M6×P1.0	φ4.9×1.5 undercut	3	3
φ8 shaft type	8	6	1.5	19.5	10	M8×P1.25	φ6.6×1.9 undercut	4	4



Material: SUS303

NSK Micro Precision Co., LTD.

<http://www.nskmicro.co.jp/> For Any updates, please check our homepage.



Head Office, Sales Division 6F Hirose Bldg., 3-17 Kanda-nishiki cho, Chiyoda-ku, Tokyo 101-005
TEL:03-5283-7420 FAX:03-5259-0882

Osaka Sales Office 5F OMM, 1-7-31 Otemae, Chuo-ku, Osaka, 540-6591
TEL:06-6942-0858 FAX:06-6941-9113

Matsumoto Sales Office (In Matsukawa factory) 2953 Moto-oshima Matsukawa-machi,
Shimo-Ina gun, Nagano Prefecture, 399-3303
TEL:0265-48-6022 FAX:0265-48-6023

※Contents may be revised without prior notice.