

## Compact Support Unit for Miniature Ball Screw



### Characteristics

#### Light weight/Compact

- Reduced 60% of total weight (comp: **CROXPORT**-MSU=6C)
- Contributing the downsizing, weight saving and high responsiveness for various machinery

#### High Rigidity

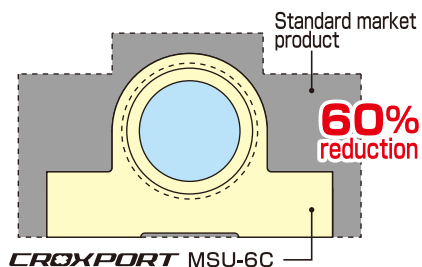
- Mounted with precisely pre-loaded **CROXY** series, achieved high axial rigidity

#### Comparison from Market Standard Products

- Identical shaft axis with market standard products
- Better performance on axial load capability (All items)

#### Applications

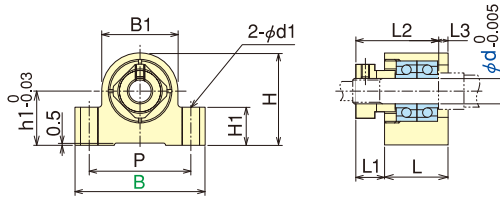
- Ball Screw Support Unit



Part	Normal Specifications
Housing	Block Type: SMF material + Low temp black chrome plating Flanged Type: SMU material + Low temp black chrome plating
Pushing Nut	SUS303 + Blackening
Bearing	<b>CROXY</b> (Clean grease LG2)
Locknut	SUS303 + Blackening
Spacer	SUS303 + Blackening
Set Piece	C3604
Hexagon Socket Set Screw	SUSXM7

Choice of block/flanged type is available depending on the usage

### Fixed Side Support Unit Block Type



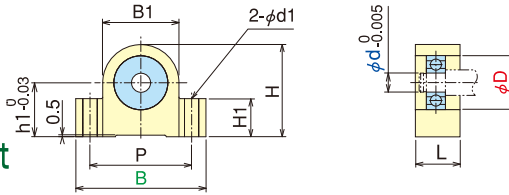
#### Part Number references **MSU-5C**

Product Code \_\_\_\_\_  
 Part Number \_\_\_\_\_  
 Form code \_\_\_\_\_  
**C** Fixed side (Block)    **CS** Supporting side (Block)  
**G** Fixed side (Flange)    **GS** Supporting side (Flange)

\* Product is a complete set of locknut, spacer and etc.  
 \* Boundary dimension of supporting side may differ from bearing ID.  
 \* Each dimension may be changed without prior notice.

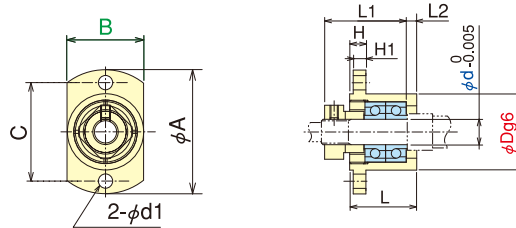
Part Number	Bearing	d	L	L1	L2	L3	B	H	h1	B1	H1	P	d1
MSU-3C	MTA03-08	3	12.5	5.5	16.5	1.5	24	14.5	9	11	5	18	3.5
MSU-4C	MTA04-11	4	14	5.5	17.5	2	27	17	10	14	6	21	3.5
MSU-5C	MTA05-13	5	15	5.5	18.5	2	30.5	19.5	11	17	6	23	4.5
MSU-6C	MTA06-15	6	17	7.5	22	2.5	35	22.5	13	19	8	26	5.5
MSU-8C	MTA08-19	8	20	9	26	3	41	29	17	24	12	32	5.5

### Supporting Side Support Unit Block Type



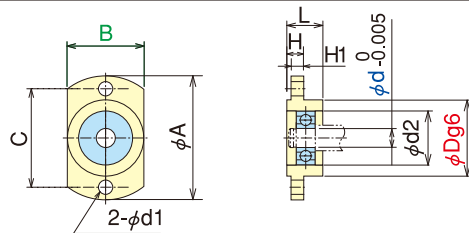
Part Number	Bearing	d	L	B	H	h1	B1	H1	P	d1	D
MSU-3CS	602ZZ	2	8	24	14.5	9	11	5	18	3.5	7
MSU-4CS	623ZZ	3	10	27	17	10	14	6	21	3.5	10
MSU-5CS	624ZZ	4	10	30.5	19.5	11	17	6	23	4.5	13
MSU-6CS	B6-113ZZ1	6	12	35	22.5	13	19	8	26	5.5	15
MSU-8CS	606ZZ	6	14	41	29	17	24	12	32	5.5	17

### Fixed Side Support Unit Flanged Type



Part Number	Bearing	d	L	L1	L2	H	D	A	B	C	d1	H1
MSU-3G	MTA03-08	3	12.5	16.5	1.5	5	11	23	11	17	3.5	3
MSU-4G	MTA04-11	4	13.5	17.5	1.5	5	14	26	14	20	3.5	3
MSU-5G	MTA05-13	5	15	18.5	2	5	17	29	17	23	3.5	3
MSU-6G	MTA06-15	6	17	22	2.5	5	19	34	19	26	4.5	4
MSU-8G	MTA08-19	8	20	26	3	4	24	39	24	31	4.5	4

### Supporting Side Support Unit Flanged Type



Part Number	Bearing	d	L	H	D	d2	A	B	C	d1	H1
MSU-3GS	602ZZ	2	8	5	11	7	23	11	17	3.5	3
MSU-4GS	623ZZ	3	10	5	14	10	26	14	20	3.5	3
MSU-5GS	624ZZ	4	10	5	17	13	29	17	23	3.5	3
MSU-6GS	B6-113ZZ1	6	10	5	19	15	34	19	26	4.5	4
MSU-8GS	606ZZ	6	10	4	24	17	39	24	31	4.5	4

## NSK Micro Precision Co., Ltd.

<http://www.nskmicro.co.jp/english> (Please visit our English site for details)

**Head office/Sales Division Headquarters**  
 6F, Hirose Building, 3-17, Kanda-Nishikicho, Chiyoda-ku, Tokyo 101-0054 Japan  
 Tel:+81-3-5283-7420 Fax:+81-3-5259-0882

**Osaka Sales Office**  
 301 Wakita-Tenmabashi Building, 2-13, Tenmabashi-Kyomachi,  
 Chuo-ku, Osaka-shi, Osaka 540-0032 Japan  
 Tel:+81-6-6942-0858 Fax:+81-6-6942-9113

**Matsumoto Sales Office**  
 2953 Moto-ojima, Matsukawa-machi, Shimonina-gun, Nagano 399-3303 Japan  
 Tel:+81-265-48-6022 Fax:+81-265-48-6023

※Contents may be revised without prior notice